

CTP Pro

Application Note



How to use a Windows compatible USB webcam with CTP...



How to use a Windows compatible USB webcam with CTP...

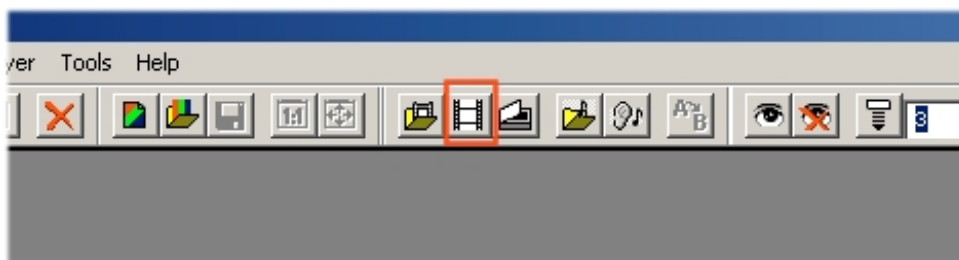
1) Attach your webcam to a free USB port of your Windows XP, Windows Vista, Windows 7 or Windows 8 computer.

Note: You do not even need to install any specific driver, simply use the generic driver that is part of your Windows. It will install automatically, as soon as you plug in your webcam.

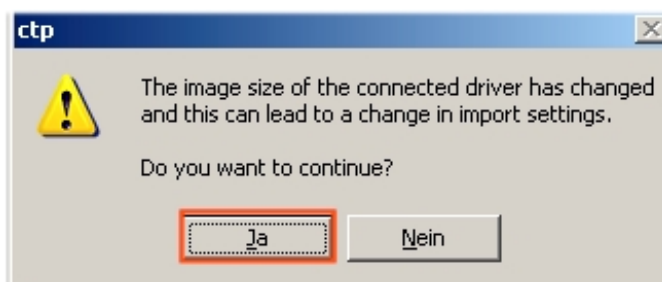
2) Start CTP.

3) Create a new scene, or simply load an existing scene, such as the „Villy the devil“ demo scene.

4) Click on the „Import Image from Video“ button:



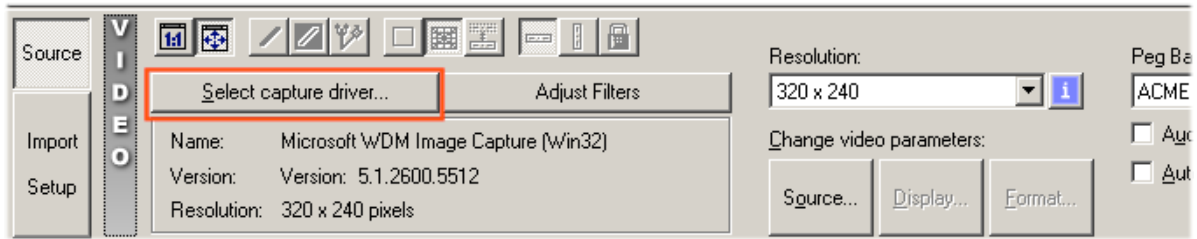
5) It is possible, that you will get the following message:



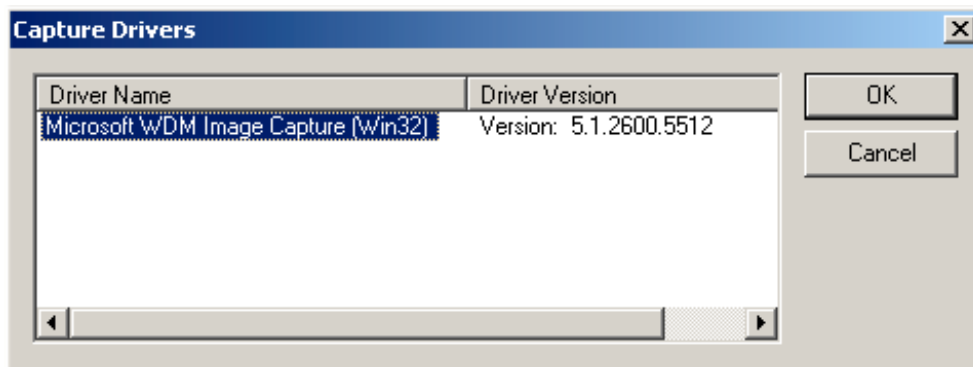
Note: Simply confirm, that you would like to continue.

6) In the background you should already see a „live“ video, taken from the camera.

7) If you do not see live video, click on „Select capture driver“:

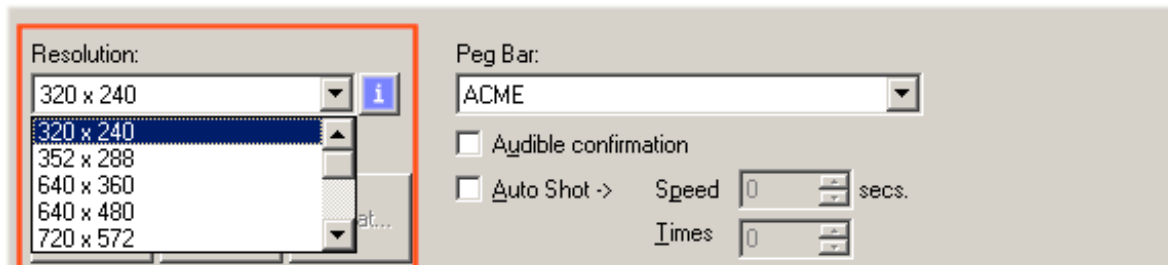


8) Check, if a similar window will come up:

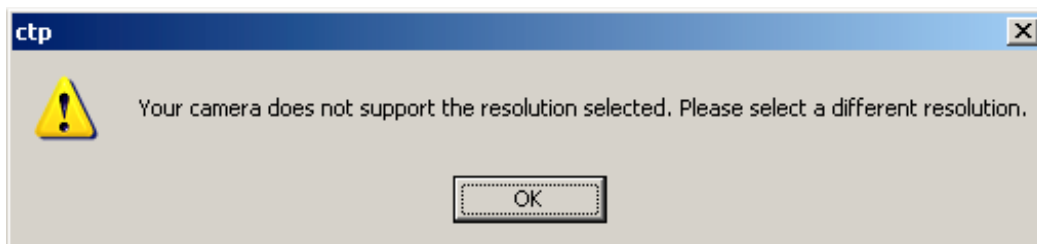


Note: This will show you, that the driver is loaded and the camera is active.

9) Try different resolutions and observe the preview in CTP:

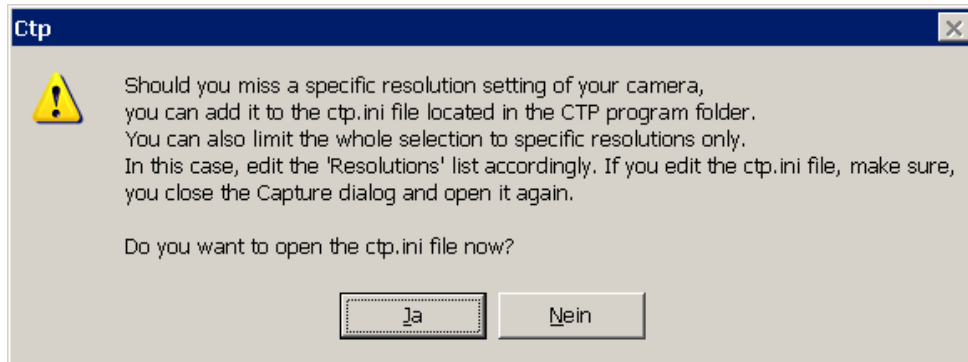


Please note: Not all given resolutions may work with your camera. Should you chose a resolution, that is not supported by your camera, you will get an information message, and CTP will return to the last supported resolution. This is normal.

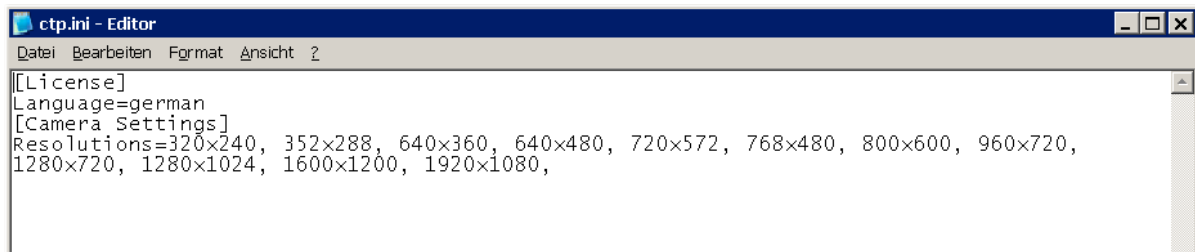


10) Hint:

It is possible to modify the list of offered resolutions to match the possibilities of your webcam. You can delete resolutions from the list by modifying the **ctp.ini** files. Click on the „i“ button. The following message will appear:



As soon as you agree to open the **ctp.ini** file, it will be opened in your Windows text editor.



Now you can edit the standard resolutions according to your needs or capabilities of your webcam. To do so, simply delete the entries for unsupported resolutions, or add missing ones supported by your webcam. Save your changes, close the Capture dialog and open it again.